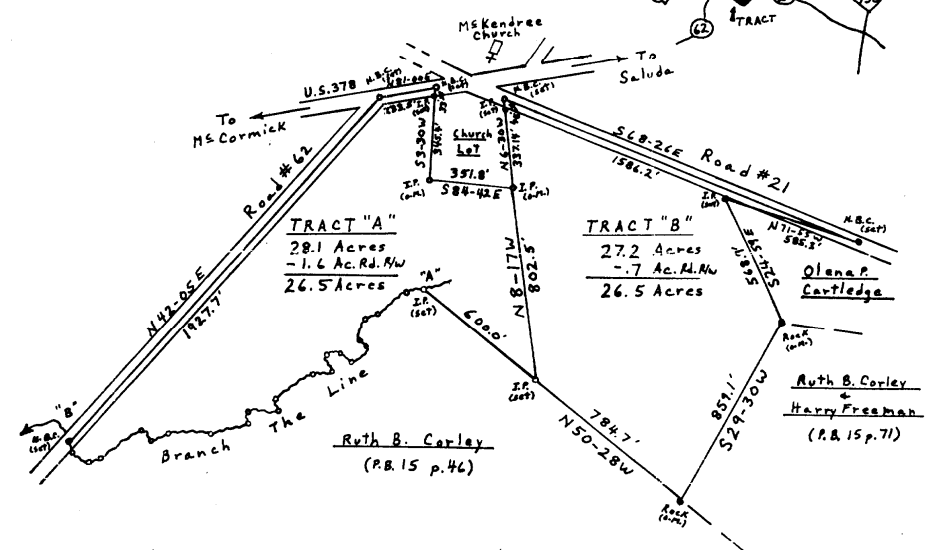
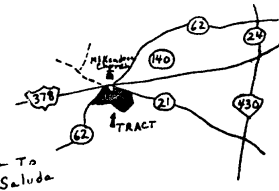




Location Map



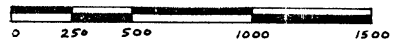
Division Of Tract For John M. Shaffer III, And Dana S. Wells Located In Edgefield Co., S.C. Surveyed By Samuel J. R. Wells, L.S.#4924 January 16, 1981, Scale 1" = 500 Feet

\* Ref. - Plat By M. E. Reames, P.B. 15 p. 46.

Bearings & Distances "A" - "B"

"A" - Dawn Branch		
S 84 - 05 W	-	100.0'
S 50 - 00 W	-	150.0'
S 71 - 30 W	-	50.0'
S 14 - 15 W	-	100.0'
S 54 - 15 E	-	30.0'
S 38 - 35 W	-	90.0'
N 48 - 00 W	-	60.0'
S 77 - 00 W	-	60.0'
S 25 - 00 E	-	70.0'
S 78 - 45 W	-	75.0'
S 55 - 45 W	-	185.0'
S 15 - 45 E	-	55.0'
S 89 - 20 W	-	120.0'
S 4 - 45 E	-	45.0'
S 72 - 30 W	-	160.0'
S 89 - 40 W	-	180.0'
S 62 - 30 W	-	65.0'
N 44 - 15 W	-	60.0'
S 55 - 00 W	-	200.0'
S 65 - 25 W	-	50.0'
N 60 - 25 W	-	85.0'
N 26 - 30 W	-	49.7'

"B" - N.B.C. & Road



#33

Index 2:40 PM + Recorded 2-10-1983

*Samuel J. R. Wells*